

# MX50

## WEARABLE TACTICAL TABLET

5.7" LumiBond® display with sunlight readable technology  
Android 5.1 OS  
MIL-STD 810G and IP67 certified  
Dedicated GPS  
8MP auto-focus camera  
HD web camera  
MIL-STD 461G certified  
NIAP CSfC certified



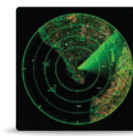
### Secure Tactical Solution

Getac has collaborated with industry-leading partners to develop an ideal solution for tactical operators, including power, communications, device management and NSA-approved file security.



### Field Rugged & Reliable

The MX50 was designed from the inside out to be compact, light and tough. It is water-proof and specifically engineered to survive drops, impact, rain, dirt and more.



### Designed for Defense

MX50's military ecosystem-friendly design, which features a customizable military connector and a MOLLE chest mount, integrates easily with existing systems and applications.



### Mission Critical Secure

MX50 is designed to help protect against known and emerging security threats across the spectrum of attack vectors.



### Long Product Life Cycle

MX50 is purpose-built and supported for long life cycles vs. a consumer-grade device, retro-fitted for commercial applications.



### Bumper-to-Bumper Warranty

Accidents happen. Only Getac offers bumper-to-bumper coverage standard on every MX50 rugged tablet.

# GETAC MX50

## Specifications



**DuraTech USA Inc.**  
**GSA Schedule 70 GS35F115BA & GSA Schedule 70 GS-35F-0143R**  
**CMAS # 3-15-70-3195A & CMAS # 3-15-70-3195B**  
**Certified 8(a), SDB, DBE, SBE, CUCP, MBE & WBE**  
**Offering Service with Pride & Integrity**

**Phone: (714) 898-2171 Fax: 866-704-9132**  
**Email: [sales@DuraTechUSA.com](mailto:sales@DuraTechUSA.com) [www.DuraTechUSA.com](http://www.DuraTechUSA.com)**

<b>Ruggedness</b>	MIL-STD-810G and IP67 certified Vibration resistant Drop resistant (26 drops from 5ft / 1.52m) MIL-STD 461G certified	<b>Power</b>	Li-Ion battery (3.7V, 4200mAh) Optional MIL-STD 461G AC adapter**
<b>Operating System</b>	Android 5.1	<b>Dimensions and Weight</b>	7.40" x 4.13" x 0.71" (188 x 105 x 18mm) 0.88 lbs (400g)†
<b>Microprocessor</b>	Intel® Atom™ x5-Z8350 Processor 1.44GHz, burst up to 1.92 GHz 2MB Cache	<b>Temperature</b>	Operating: -6F to 140F / -21C to 60C Storage: -40F to 160F / -40C to 71C Humidity: 95% RH , non-condensing
<b>Memory</b>	2GB LPDDR3	<b>I/O Interfaces</b>	Micro USB OTG x 1 Headphone out/Mic-in Combo x 1 Optional Rugged GlenAir Connector x 1, or Optional Rugged AB Connector x 1
<b>Storage*</b>	64GB / 128GB eMMC	<b>Software</b>	Getac File Manager GPS Utility Getac Utilities Google GMS
<b>Display</b>	5.7" IPS TFT LCD HD (1280 x 720) 480 nits LumiBond® display with sunlight readable technology Glove-friendly capacitive touchscreen	<b>Warranty</b>	3 Year bumper-to-bumper warranty standard††
<b>Communications</b>	WiFi 802.11 a/b/g/n Bluetooth (v4.0) Dedicated GPS	<b>Accessories</b>	MX50 MIL-STD-461G AC Adapter (Glen air connector) (24W) w/ US Power Cord <b>GAAGU1</b> MX50 SnapBack Battery (17WH) <b>GBS1X1</b> MX50 SnapBack Battery (17WH) with Extended Tactical Vest Mount For SnapBack Battery) <b>GBS1X2</b> MX50 SnapBack Battery Charger (5-Bay) (w/ 90W AC Adapter) <b>GC5CU1</b> MX50 Tactical Vest Mount (For MX50 w/o SnapBack Battery) <b>GCCMX1</b> MX50 Extended Tactical Vest Mount (For SnapBack Battery) <b>GCCMX2</b> MX50 Multi-Bay Dock (10-Bay) (w/ 90W AC Adapter) <b>GDMDU1</b> MX50 Hard Tip Stylus <b>GMPSXH</b>
<b>Cameras</b>	HD Web camera 8M pixels auto focus camera		
<b>Keyboard</b>	10 buttons (Power, Restart, Screen Brightness, Directional Keypad, Back, Home, Menu, Function Key, Programmable Key 1, Programmable Key 2)		
<b>Expansion Slots</b>	MicroSD x1		
<b>Security Features</b>	NIAP CSfC certified		

Specification subject to change without notice.

\* For storage, 1GB = 1 billion bytes; actual formatted capacity less.

\*\* Battery performance will vary based on software applications, wireless settings, power management settings, LCD brightness, customized modules and environmental conditions. As with all batteries, maximum capacity decreases with time and use and may eventually need to be replaced by a Getac service provider. Battery life and charge cycles vary by use and settings.

† Weight varies by configuration and manufacturing process.

†† 3 year bumper-to-bumper warranty standard. For warranty terms and conditions visit [www.getac.com](http://www.getac.com)

Copyright 2017, Getac, All Rights Reserved. Getac, the Getac logo and LumiBond™ are either registered trademarks or trademarks of Getac Technology Corporation in the United States and/or other countries. All other trademarks are the property of their respective owners.