

onBoard™ MOBILITY MANAGER

MOBILE ENTERPRISE NETWORK MANAGEMENT

oMM Core

OVERVIEW

onBoard™ Mobility Manager (oMM) is a network management system that collects and analyzes data from a fleet of onBoard Mobile Gateways (oMGs). The oMM incorporates powerful tools to manage your entire mobile network and to monitor the status, accessibility and utilization of all oMGs and wide-area networks. The oMM is available as a hosted service, or as an appliance licensed for operation within your enterprise network.

DASHBOARD

The dashboard provides a configurable, color-coded view of fleet health, enabling administrators to monitor a large number of oMGs and their associated operating parameters. Each parameter has a configurable multi-level threshold that can be programmed to change the color of each display icon as thresholds are exceeded. Display filters are provided to allow network managers to quickly focus on a subset of information. The fleet can be segmented into groups, and users assigned different levels of access. Many dashboard display parameters permit immediate 'drill down' for greater detail with a single click on a selected display element.

REMOTE MANAGEMENT & CONFIGURATION

The oMM supports remote management of the operating configuration of each oMG in the fleet. oMM users with administrative access can remotely reconfigure oMGs individually over-the-air, or can use the mass configuration capability to apply new oMG operating parameters to the entire fleet. These powerful remote management features are crucial to effective maintenance and long term performance of any large-scale mobile communications solution.

CORE REPORTS

To augment the fleet status snapshot provided by the dashboard, historical reports are used for deeper analysis and troubleshooting using accumulated management information. Reports may be scheduled to run periodically, with results saved to the server and emailed to multiple recipients. Report data may be exported in Excel format for further manipulation or integration with other systems. The following core reports are available:

1. **Coverage Maps:** Maps wide-area network coverage based on data from multiple oMGs over a specified time
2. **Coverage Trails:** Maps the wireless service accessed along a path travelled by individual oMGs
3. **Availability Trend:** Summarizes wireless connection availability as a percentage of total vehicle operating time for selected oMGs
4. **Bandwidth Consumption:** Reports data received and transmitted on each network for an individual oMG or groups of oMGs
5. **Link Utilization:** A time-based depiction of network connection status and multi-network switching for individual oMGs
6. **Event Viewer:** A powerful troubleshooting tool that filters raw vehicle event data for selected oMGs.

KEY FEATURES

Advanced network diagnostics

Real-time view of entire mobile network

Remote troubleshooting

Configurable thresholds

Multi-level user privileges

Fleet segmentation

Color-coded dashboard

Location-based reporting

Remote configuration management



LOCATION-BASED REPORTING

GPS data supplied by the oMG is used by the oMM to provide a location-based view of management information. A map view of selected oMGs shows the last-reported location along with a color-coded flag to indicate the unit status. Microsoft® Maps (Bing) are standard and the user may also select Google™ or ESRI™ maps. Network coverage, network utilization and system utilization reports are available in mapped display formats.

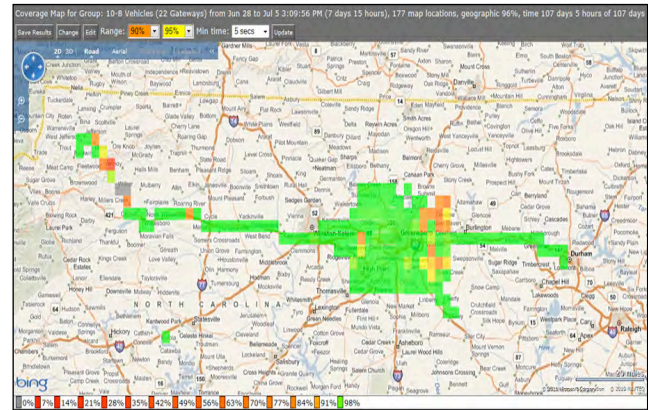
STATISTICS

Access individual parameters for analysis and troubleshooting. oMG logs are automatically updated and stored on the server, ready for access at any time. Data may be sorted, filtered and displayed in a variety of ways to ensure your fleet communications platform continues to perform optimally.

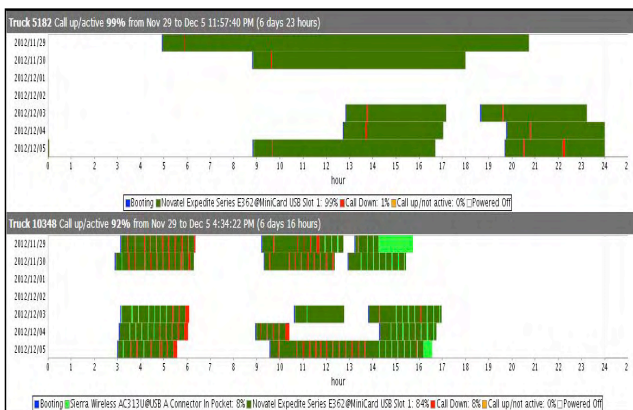
Bandwidth Consumption Report



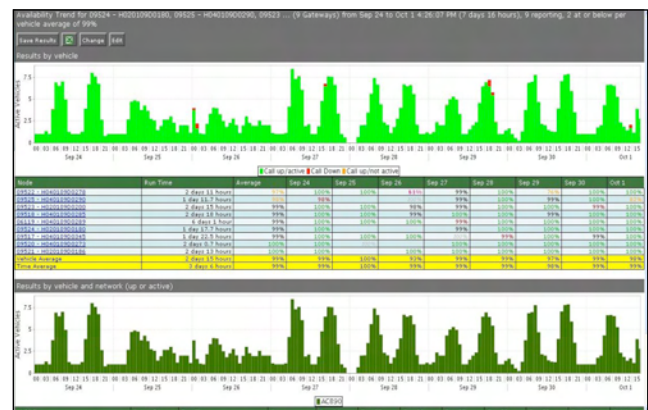
Coverage Map



Link Utilization Report



Availability Trend



DuraTech USA Inc.
A Certified 8(a), SDB, DBE, SBE, MBE, WBE firm.
Phone: (714) 898-2171 Fax: 866-704-9132
Email: sales@DuraTechUSA.com www.DuraTechUSA.com