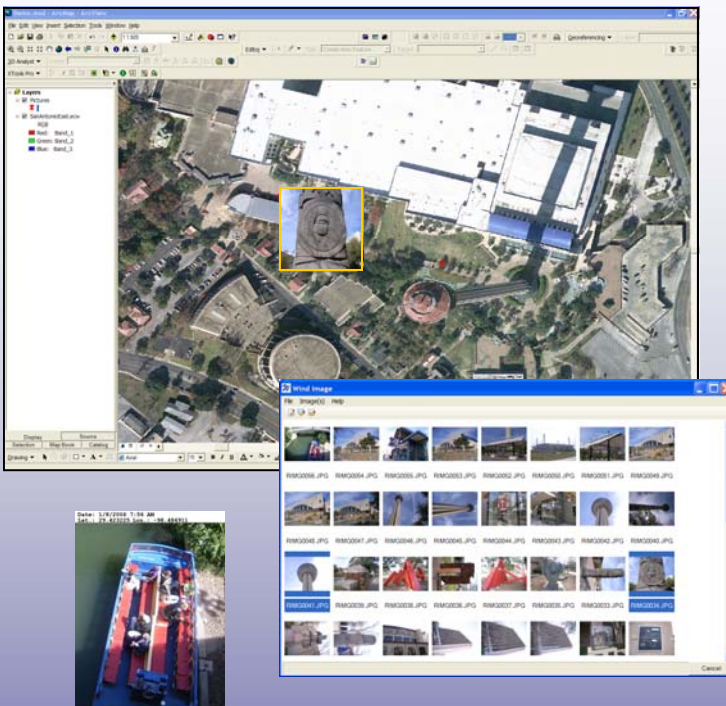


Wind Image™

For ArcMap



Seamless Image Integration into ESRI ArcMap Software



Highlights:

- Supports all coordinate systems currently supported by ArcMap.
- Process GPS track-logs into line or point datasets.
- Create Shp files and ESRI Feature classes
- Supports all ESRI Geo-database types Personal, File, and ArcSde.
- Process photos into hyperlinked and raster embedded datasets.
- Robust set of photo editing tools.
- Photo thumbnail viewer.
- Imprint date time, GPS position, and attributes on photos.
- Native support in both ArcMap and ArcReader for viewing raster embedded datasets.
- Single license can be installed on two computers as long as they are only used by one user. Such as a laptop and desktop PC.
- One year of updates included.
- Automatic rotation of symbology based on compass direction.
- Add processed images to map display for easy printing.



DuraTech USA Inc.
A Certified 8(a), SDB, DBE, SBE, MBE, WBE firm.
6765 Westminster Ave #314 Westminster, CA 92683
Phone: (714) 898-2171 Fax: 866-704-9132
Email: sales@DuraTechUSA.com www.DuraTechUSA.com

